

Your Support Helps Create Future Leaders -
Child Care Scholarship Fundraiser on [Giving Tuesday](#), Dec. 1st, 2020.



Almost 1 in 4 families with children in the U.S. have income below the ALICE* Threshold.

- More than 1/4 of households below the ALICE Threshold do not have adequate internet access, compromising participation in e-learning.
- Parents who need to work cannot stay at home with their children, leading to health and safety issues for unsupervised children or jeopardizing a parent's ability to work.
- ALICE families can lose access to other supports, such as free or reduced-price breakfasts and lunches provided at school.

*Asset, Limited, Income-Constrained, Employed



#GivingTuesday

United Way of Kitsap County

www.unitedwaykitsap.org



Real change – change that matters – rarely comes from business as usual.

As your local United Way, we have a unique and vital role in the communities we serve.

We are not about one cause or issue. We understand the importance of being able to shift priorities and adapt, as our community needs change. We understand the gravity and interconnectedness of the social challenges we face as a community. We understand our role in working with partners during a disaster or a pandemic to help our community recover, rebuild, and thrive.

We can build a better tomorrow, When we start today.

Thank You!





ALL KIDS DESERVE

TO DREAM BIG



2-1-1

VolunteerKitsap
get connected

United Way fights for the Education, Health, and Financial Stability of every person in Kitsap County.

Your support helps that fight become a win.

A win that's not just a short term contribution, but a long term solution.

That's why we invest and partner with community impact work such as Graduate Strong.

United, We Lift Up Our Community

Learn how your actions today can transform tomorrow at www.unitedwaykitsap.org



Call 2-1-1 if you need help finding resources or applying for Basic food (Food Stamps) in Washington State.



2-1-1 is also part of the team handling Dept. of Health COVID-19 hotline calls.

United, We Lift Up Our Community — Learn how your actions today can transform tomorrow at www.unitedwaykitsap.org

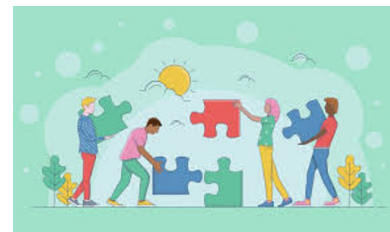


Here's how you can [help support](#) this critical regional resource.

[WA211 Fall Update](#)



We are grateful for the amazing impact your gifts and trust are helping us facilitate. See how the strength of our shared work and investments in [Kitsap Strong](#), a community/collective impact collaborative are starting to bear fruit.



Thank you to our 2020 Platinum Sponsor



Leave 10 Kitsap is a collaboration of 13 of the leading nonprofit organizations in the Kitsap Area. [Join us](#) in making Leave 10 Kitsap an essential component of taking care of our children, grandchildren and future generations.



Leave 10
KITSAP



Coffee Chat with Carl, our Executive Director

We love making connections! If you'd like to meet for coffee to chat about how you can be a hand-raiser & game-changer, just send us an [email](#). In the meantime, we invite you to visit us at www.unitedwaykitsap.org.



Save the Dates:

- **5th Annual Lifting Spirits part Deux**- Friday, April 16, 2021
- **Letter Carriers' Food Drive** = Originally scheduled for May 9th, has been postponed - watch our [Facebook page](#) for updates.
- **Golf Classic** originally scheduled for July has been cancelled. This is our annual fundraiser to support our work with Kitsap Strong. You can still help us lift up this work by donating [here](#).
- **27th Annual Day of Caring** - part Deux - June 25 2021 - watch for other volunteer opportunities at www.VolunteerKitsap.org



We believe to succeed as a community, we must tackle the challenges of inter-generational poverty together. Your support is leveraged to do what matters; win the fight for the education, health and financial stability for all in Kitsap County. #LiveUnitedKitsap



United Way of Kitsap County

