



2-1-1 is a key part of the team handling COVID-19 hotline calls.

United, We Lift Up Our Community

Help Your Neighbors Get Help

In a crisis, in a disaster, in a pandemic, 211 is here to help every person in our community. From finding food and paying for housing and bills to connecting to other essential services, 211 is there. Every 211 is part of the national 211 network, United to help as many people as possible.

Thank you for making your gift today!



Your gift helps calls for help get answered.
Our goal is 2100 donors giving \$21 in honor of 211 Day 2021.
Thank you for answering the call by donating today!

211 of the Peninsulas' is a program of United Way of Kitsap County serving Clallam, Jefferson, Kitsap, Mason, Grays Harbor & Pacific Counties.

[WA211 Data Tool](#)



Thank you to our 2021 Platinum Sponsor



[Grant Applications are now Open!](#)



GIVE ALL KIDS A STRONG START

We believe to succeed as a community, we must tackle the challenges of poverty together. We do that when we invest in root causes. Because a child's neighborhood or family income shouldn't restrict their access to high-quality education, we've created a Child Care Sustainability and Families Support Grant Program.

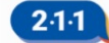
Almost 1 in 4 families with children in the U.S. have income below the ALICE* Threshold.

- More than 1/4 of households below the ALICE Threshold do not have adequate internet access, compromising participation in e-learning.
- Parents who need to work cannot stay at home with their children, leading to health and safety issues for unsupervised children or jeopardizing a parent's ability to work.
- ALICE families can lose access to other supports, such as free or reduced-price breakfasts and lunches provided at school.

*Asset, Limited, Income-Constrained, Employed



United Way of Kitsap County



Perennial



United Way fights for the Education, Health, and Financial Stability of every person in Kitsap County.

Your support helps that fight become a win.

A win that's not just a short term contribution, but a long term solution.

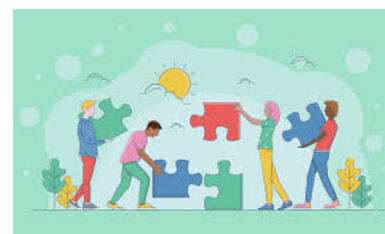
United, We Lift Up Our Community

Learn how your actions today can transform tomorrow at www.unitedwaykitsap.org

To learn more about ALICE, visit <https://www.unitedwaykitsap.org/alice>



We are grateful for the amazing impact your gifts and trust are helping us facilitate. See how the strength of our shared work and investments in [Kitsap Strong](#), a community/collective impact collaborative are starting to bear fruit.



Leave 10 KITSAP

Leave 10 Kitsap is a collaboration of 13 of the leading nonprofit organizations in the Kitsap Area. [Join us](#) in making Leave 10 Kitsap an essential component of taking care of our children, grandchildren and future generations.



Save the Dates:

[Leverage Your Marketing Budget - Sponsorship Packages Available](#)

- **Kitsap Great Give** - Tuesday, April 20, 2021
- **5th Annual Lifting Spirits part Deux**- Friday, Sept. 24th, 2021. Email [Tamra](#) for sponsorship opportunities.
- **Letter Carriers' Food Drive** - traditionally the 2nd Saturday in May - watch our [Facebook page](#) for updates.
- **Golf Classic** - Friday, July 16, 2021. This is our annual fundraiser to support our work with Kitsap Strong. Interested in being a sponsor or golfing? Email event Chair [David Foote](#).
- **27th Annual Day of Caring** - part Deux - June 25 2021 - watch for other volunteer opportunities at www.VolunteerKitsap.org - Interested in being a sponsor? Email [Tamra](#).



We believe to succeed as a community, we must tackle the challenges of inter-generational poverty together. Your support is leveraged to do what matters; win the fight for the education, health and financial stability for all in Kitsap County. #LiveUnitedKitsap



Coffee Chat with Carl, our Executive Director

We love making connections! If you'd like to meet for coffee to chat about how you can be a hand-raiser & game-changer, just send us an [email](#). In the meantime, we invite you to visit us at www.unitedwaykitsap.org.



United Way of Kitsap County

